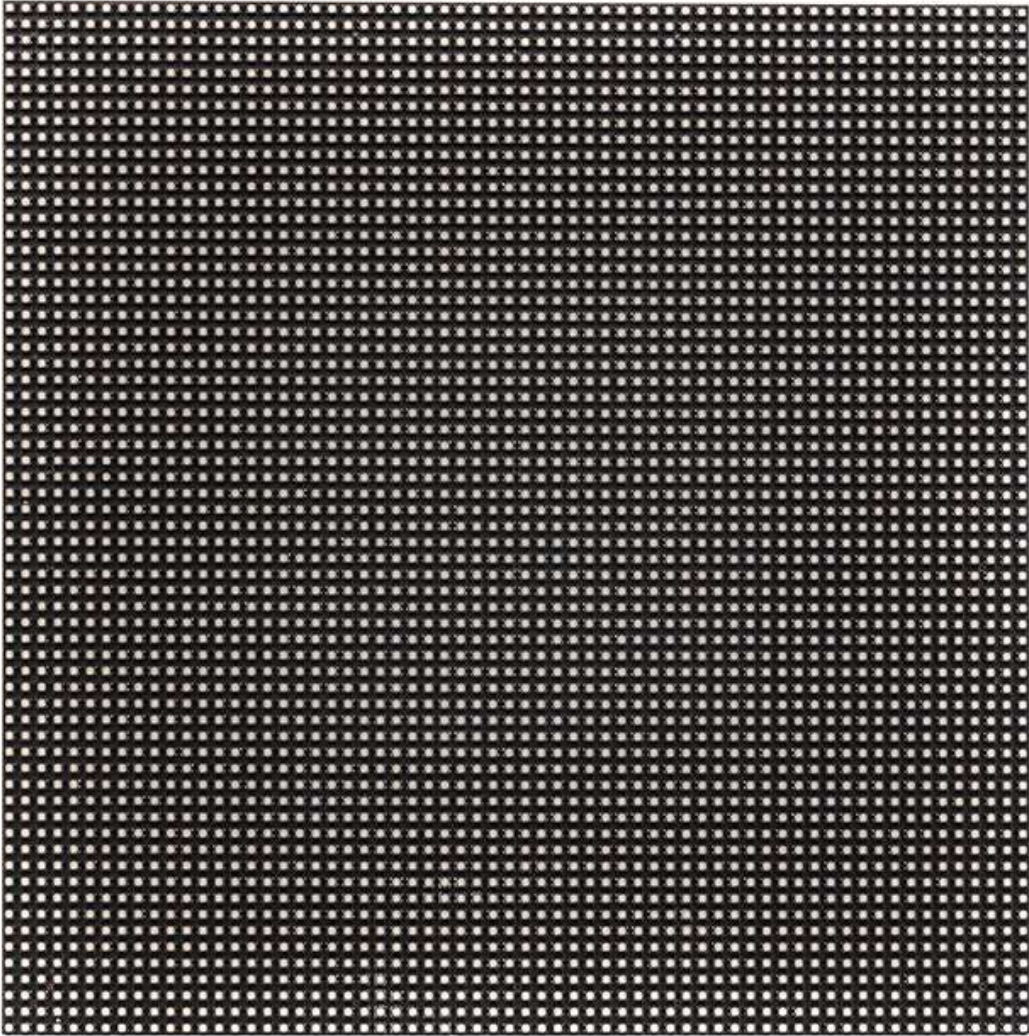
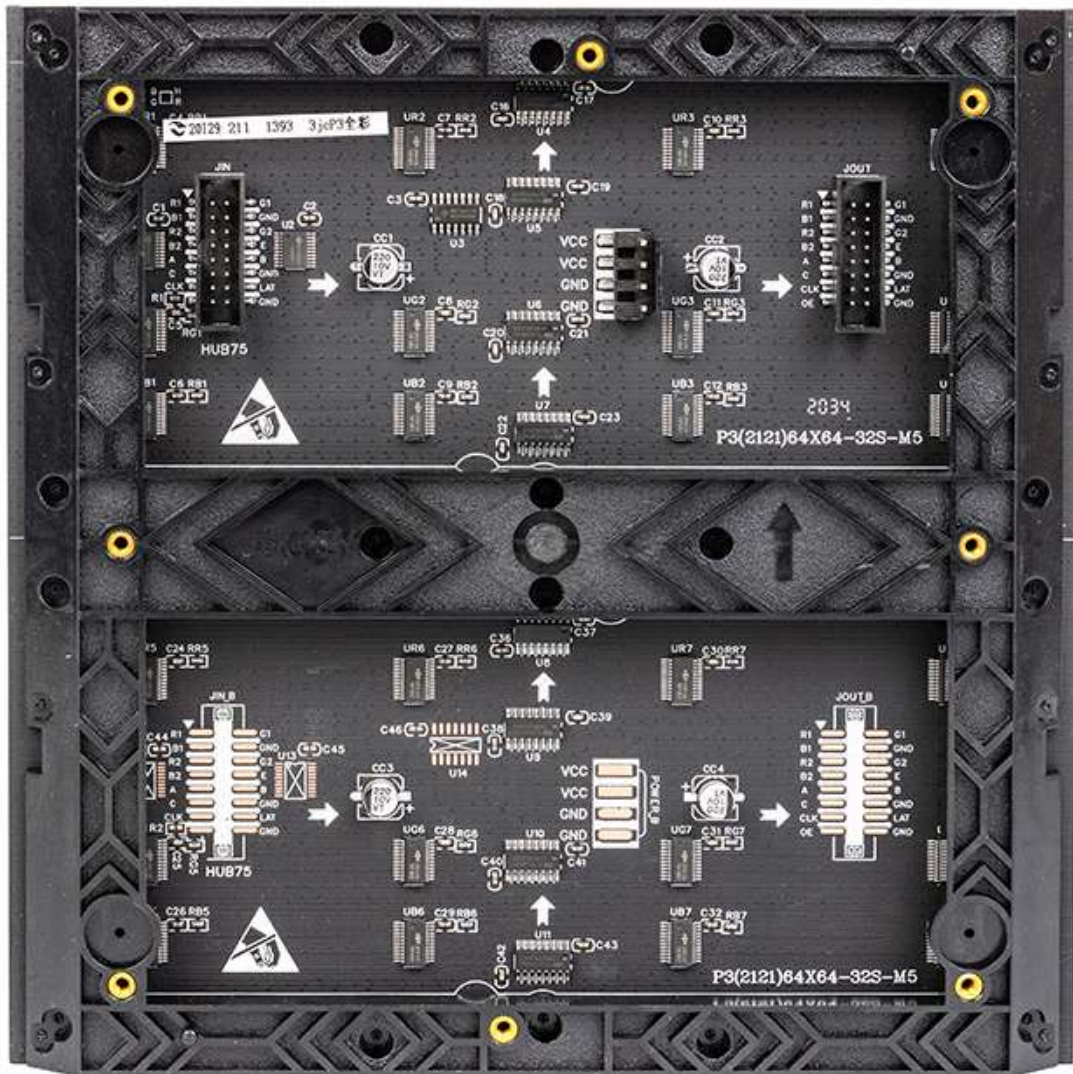


LED MODULE

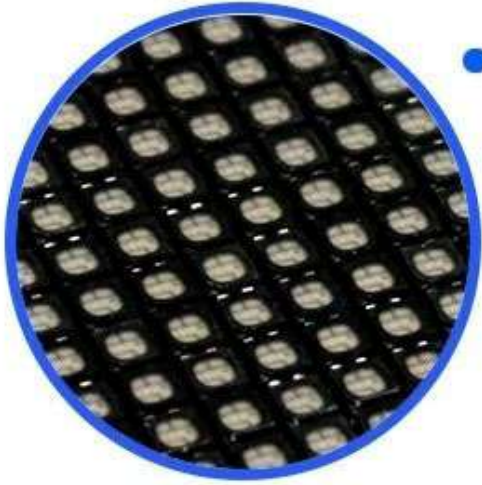
SMD2121 Indoor P3 Led Screen Panel Led Wall Panel Led Screen Display 192 x 192mm P3 Led Module





LED MODULE

High refresh for good display effect, high brightness,
low power consumption



- High brightness
- High refresh rate
- High quality

SMD1515 black led
3840hz refresh rate



PCB CIRCUIT BOARD

The circuit board adopts the wave soldering process and has an oxygen barrier layer to prevent the moisture and oxidation of the circuit and increase the service life.



High Refresh rate

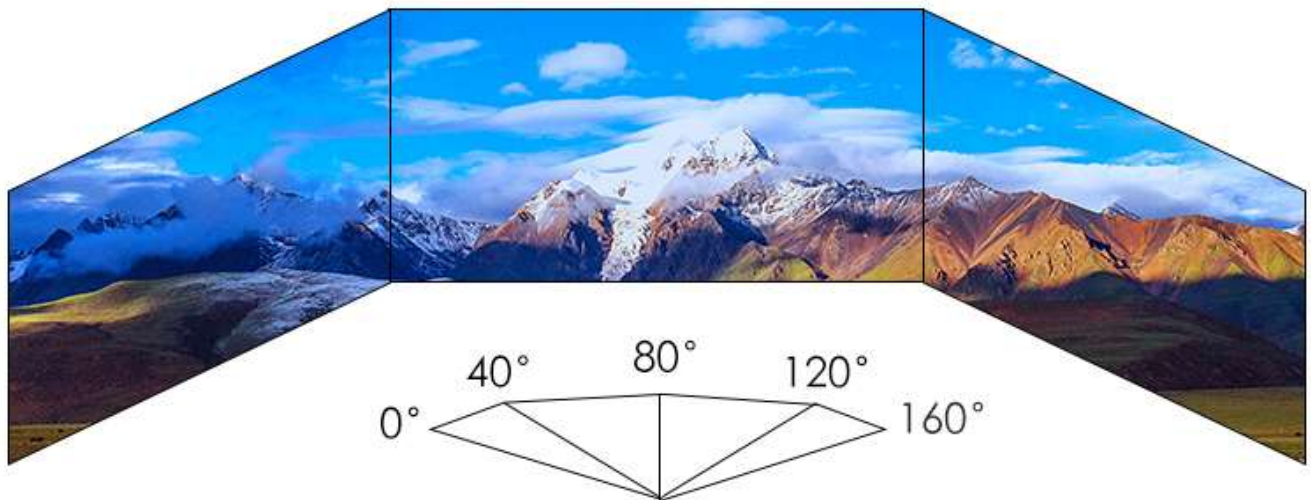


our module



other factory

Wide view angle



H 160/V 120

Item	Value
Model No.	P3
Pixel Pitch(mm)	3
Pixel Density(dots/sqm)	111111
LED Type	SMD2121
Drive type	1/32 S
Viewing Angle(Deg.)	H:140 V:120
Brightness(nits)	800~1000
Refresh Rate(Hz)	1920-3840
Module Size(mm)	192*192
Cabinet Size Recommended (mm)	64*64
Cabinet Material	Die-casting aluminum
Power Consumption (Avg./Max. W/sqm)	350/650
IP Grade	IP31
Operating Temp/Humidity (°C/%RH)	-20°C~50°C 10~90%RH
Storage Temp/Humidity (°C/%RH)	-30°C~60°C 10~90%RH
Lifetime(hours)	≥100000(Normal Temp)